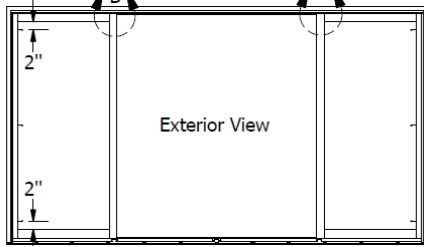
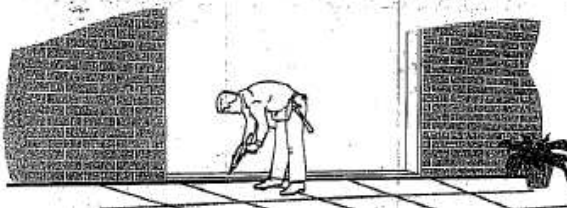


# OXXO (Quad) Patio Door Installation Instructions

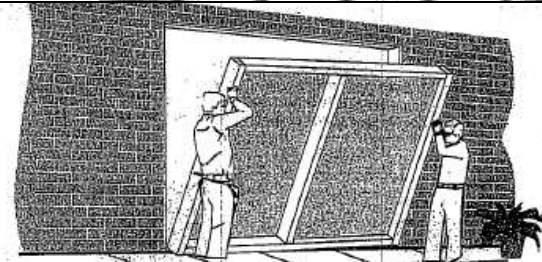


Exterior View

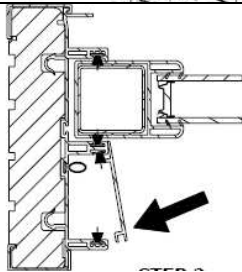
The OXXO (Quad) door assembly is shipped with the outer fixed sash (door) panels installed. The operating sash panels and bug screens are shipped and packaged separately. Handle kits are pre-installed on the operating sash panels. Hardware kit is stapled to the side of the frame. Remove all packaging including the plywood skid plates stapled to the bottom of the door frame.



Apply 3 thick beads of caulking along the floor over the entire width of the rough opening. Note: A level sill is critical to the performance of the door. Use floor levelling compound or wood shims to insure a flat and level surface prior to setting the door.



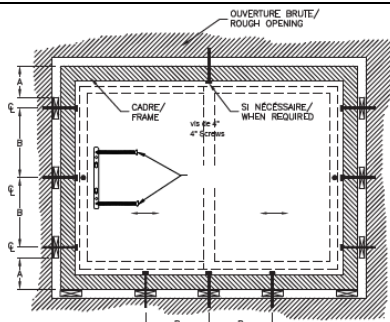
Place door unit in the opening - sill first (make sure there is a good caulking seal between the floor and the door sill).



Top view of side jamb

Remove the side cover to allow fastening of the frame to the rough opening. Re-install the side cover after the door frame has been fastened to the rough opening. A soft mallet may be required to get the cover to clip into place.

Note: 4" long screws (not included) are to be installed centered within the channel once the door frame is in final position and shimmed.



MATERIEL / MATERIAL	POSITION SUR LE CADRE / POSITION ON FRAME	
	MIN A*	MAX B
P.V.C	200mm (8")	380-600mm(15-24")
WOOD	50mm (2")	800mm (32")

\*LORSQUE LA COULEUR DU FINI EXTERIEUR EST FONCÉE, AJOUTER 50MM (2") À LA DIMENSION "A" CI-DESSUS  
 \*WHEN EXTERIOR FINISH IS DARK COLOURED, ADD 50mm (2") TO THE ABOVE INDICATED "A" DISTANCE.

## IMPORTANT:

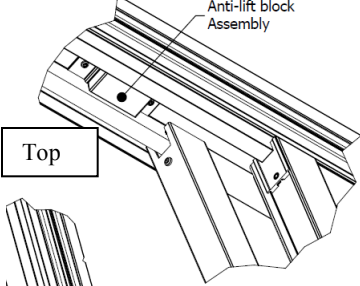
Handling and installation of this product under temperature below freezing point (0°C/32°F) may cause serious damage to the product. **Handle with care.**

### Installation:

1. The dimension of the opening must exceed the exterior dimension of the door frame by 19mm (3/4") in width and by 10mm (3/8") in height.
2. When installing, this product must be squared and levelled.
3. Wedge the frame as shown in the sketch, that is: three wedges between the structure and the door jambs and one wedge between the structure and the center of the header, as well as one at the centre of the door sill.
4. Make sure the header, the door sill and the door jambs are straight.
5. Fill the space between the door frame and the structure with insulation. Beware: excessive insulation may warp the frame.

Shim door and install 4inch long screws (not included) as shown.

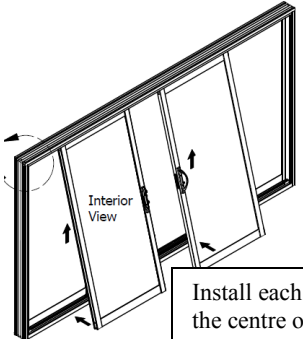
**CAUTION:** Do not over shim as this will cause the unit to bind!



Anti-lift block Assembly

Top

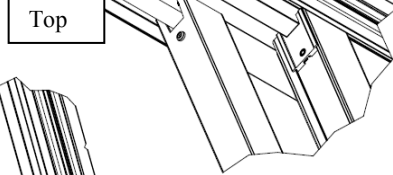
Once the door frame has been fastened in place, remove the anti-lift block assembly from the top middle (only) of the frame. Note that the anti-lift block is to be reinstalled once the operating sash panels have been installed.



Interior View

Install each sash initially within the centre of the door frame then move to outside of frame.

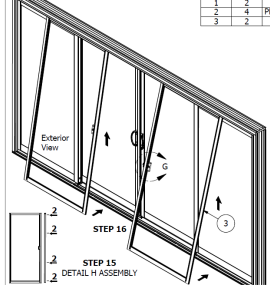
Once the panels are installed, open the operating sash panels and reinstall the anti-lift block assembly to the top middle of the frame.



Anti-lift block Assembly

Top

The passive operating sash (with "H" channel) comes complete with a foot lock-bolt on the interior side. (Note: the quad door can optionally have foot lock bolts on both operating door panels).



1	2	3
2	4	PS
3	2	

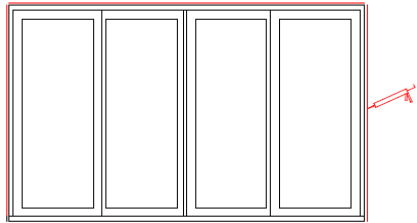
Exterior View

STEP 16

STEP 15  
DETAIL H-ASSEMBLY

Install the bug screens as shown. Insure that the bug screen with the "H" channel is on the same side as the passive sash panel (with the included foot lock bolt).

The bug screen roller operation can be adjusted by tightening or loosening angled set-screws located at the sides of each bug screen.



Seal the joints of the entire exterior perimeter of the door and rough opening.